

# Rochester Elks 2120 – FEB 2013



**I hope everyone that received the survey letter has sent it back to Bob Maes. The committee is interested in everyone's opinions. This is every members lodge, so please send in your reply to the survey.**

**As most of you have heard some people have voiced that they don't want to come this far out to have a drink because they are afraid of being picked up. I understand this. Does anyone have any ideas on how to help this situation? I would certainly like to hear it!**

**Let's not forget at the February 4<sup>th</sup> meeting we will have nominations of officers and trustees. We certainly need people to step up and take an office. The following meeting on February 18<sup>th</sup> is election of officers. We definitely need these positions filled. This is part of the reason we are on probation. We do not have our chairs filled.**

**Has anyone noticed we moved the tube for donations to the Parade of Nickels? It's beside the door as you come in. Let us help our veterans!!**

**Sunday evening we had our potluck carry-in. Such great food! What we do is carry in one of our favorite dishes or whatever you feel like fixing. Along with the food there is such a good fellowship among the members. Come check it out. I don't think you'll be sorry and you will definitely leave with a full tummy.**

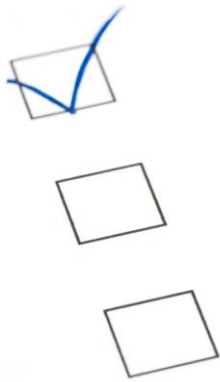
**Till next month, see you around the Lodge. Jackie, Exalted Ruler**

*Lakeside Dining  
Valentine  
Specials*



**Thursday, February 14th**

**Chicken Oscar • Pan Fried Walleye  
New York Cheesecake**



# ATTENTION ALL MEMBERS



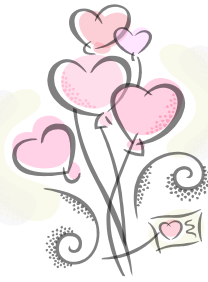
## NOMINATIONS OF 2013-2014 OFFICERS

**Monday  
February 4<sup>th</sup> at 7:30 pm**



## ELECTION OF 2013 -2014 OFFICERS


**Monday  
February 18<sup>th</sup> at 7:30 pm**



## February Birthdays

- 2/2 – Bobby Schoen
- 2/3 – David Holloway, Wayne Jana, Roy Shafer, Ron Vititoe
- 2/4 – Jennifer Fickle, Orval Huffman
- 2/5 – Randy Hardesty, Ben Vincent
- 2/7 – Richard Day
- 2/8 – Jack Shambaugh
- 2/9 – Roger Terry
- 2/10 – Bruce Mattice
- 2/11 – John Graft, Treva Mulligan
- 2/12 – Stephen Cox, Donald Fisher, Chad Pugh
- 2/13 – Noble Krugman, Hugh Leeman
- 2/14 – Joyce Wagoner
- 2/15 – Wendell Bearss, William Hauenstein
- 2/16 – Gwen Hornstein, Harold Townsend
- 2/17 – Tara Emmerling
- 2/18 – Joyce Harmon, Curt Kline, David Mesecar, Dee Williams
- 2/19 – Craig Armstrong, Theodore Gerst  
**(PLEASE WISH A HAPPY 80<sup>TH</sup> TO TED)**
- 2/20 – Tracie Crispen, Mark Miller, Robert Sullivan
- 2/21 – Alan Good, Greg Mellinger
- 2/23 – DJ Frounfelter, Melvin Perdue
- 2/24 – Michael VanDenbossche, Lance Young
- 2/26 – Shane Lehman, Juan Ruiz
- 2/27 – Kenneth Coleman
- 2/28 – Gerry Hizer, Harvey Keim
- 2/29 – Gary O’Sullivan



Sunday	Monday	Tuesday	Wednesday	Thursday	Friday	Saturday
<i>Newsletter Printed by Hardesty Printing</i>					1 <i>Lakeside Dining</i> TEXAS HOLD'EM 6 PM DRAWING 9 PM	2 <i>Lakeside Dining</i> TEXAS HOLD'EM TOURNAMENT 1 PM
3 MONTHLY DRAWING 4 PM	4 LODGE MEETING 7:30 PM <b>NOMINATIONS</b>	5	6	7	8 <i>Lakeside Dining</i> TEXAS HOLD'EM 6 PM DRAWING 9 PM	9 <i>Lakeside Dining</i> TEXAS HOLD'EM TOURNAMENT 1 PM
10	11	12	13	14  <b>LAKESIDE DINING</b> 5:30 – 8:30	15 <i>Lakeside Dining</i> TEXAS HOLD'EM 6 PM DRAWING 9 PM	16 <i>Lakeside Dining</i> TEXAS HOLD'EM TOURNAMENT 1 PM
17	18 LODGE MEETING 7:30 PM <b>ELECTIONS</b>	19	20	21 MONEY DUE FOR MONTHLY \$1,000 DRAWING	22 <i>Lakeside Dining</i> TEXAS HOLD'EM 6 PM DRAWING 9 PM	23 <i>Lakeside Dining</i> TEXAS HOLD'EM TOURNAMENT 1 PM
24	25	26	27	28 \$1,000 DRAWING 7 PM		

**FEBRUARY 2013**

Telephone Numbers/Websites  
 Lodge 223-3704  
 Pro Shop 223-4427  
 101 Website: <http://www.elks2120.com>  
 Grand Lodge [www.elks.org](http://www.elks.org)  
 Indiana Elks <http://www.indianaelks.org>

# Lakeside Dining

*Bruce Lloyd is cooking  
on Friday Nights &  
Saturday Nights*

## ELK'S LODGE HOURS



### DINING ROOM

Friday.....5:30 PM to 8:30 PM

Saturday.....5:00 PM to 8:30 PM  
(Early Bird Specials 5 to 6 PM)

### BAR

Monday.....CLOSED

Tuesday.....3 to 8 PM

Wednesday .....3 to 8 PM

Thursday.....3 to 8 PM

Friday.....Noon to Close

Saturday.....Noon to 9 PM

Sunday.....Noon to 6 PM

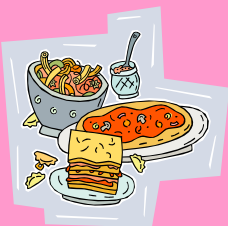
# Specials!

Daily Drink Specials!

**Potluck  
Sunday's**

**Bring  
Your  
Favorite  
Dish &  
Come On  
Out**

**Eats  
Around  
5pm**



## 2012-2013 ELK OFFICERS

Exalted Ruler.....Jackie Holloway  
Leading Knight.....OPEN  
Loyal Knight.....Susie Hilton PER  
Lecturing Knight.....Linda Scott  
Secretary.....Kathy Easterday, PDDGER  
Treasurer.....OPEN  
Esquire.....OPEN  
Tiler.....Mary Pike  
Chaplain.....Ed Provost  
Inner Guard.....OPEN  
Trustee.....OPEN  
Trustee.....Joyce Harmon  
Trustee.....Jim Scott  
Trustee.....OPEN  
Trustee.....OPEN

## DRAWINGS

### Weekly:

Friday's at 9 pm

### Monthly:

1<sup>st</sup> Sunday at 4 pm

### Monthly \$1,000 Drawing:

4<sup>th</sup> Thursday at 7 PM

## TEXAS HOLD'EM / OMAHA HI-LO

LIVE GAME FRIDAY'S AT 6 PM &  
TOURNAMENT SATURDAY'S AT 2 PM



CONTACT GWEN HERRICK FOR  
QUESTIONS AT 574-721-6133